

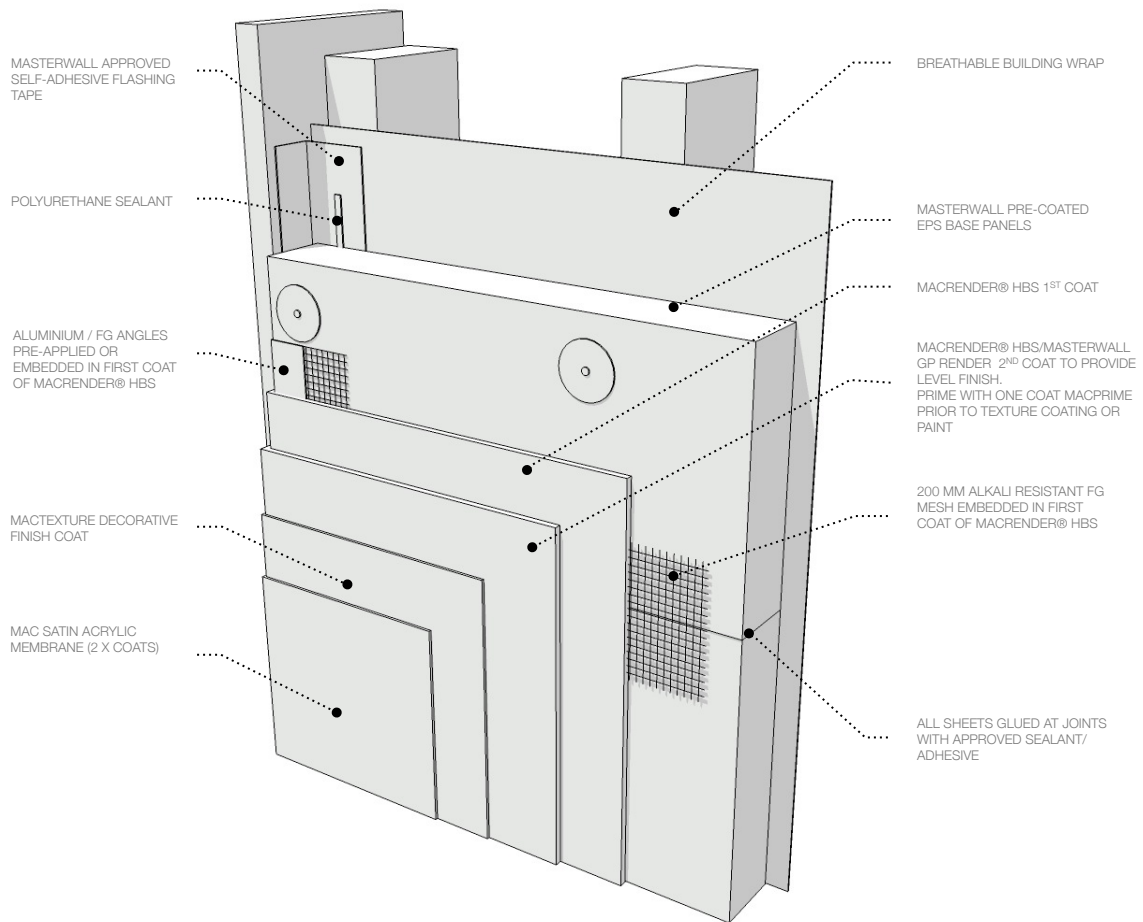
COATING SYSTEM SPECIFICATION: MCS-014-13/05

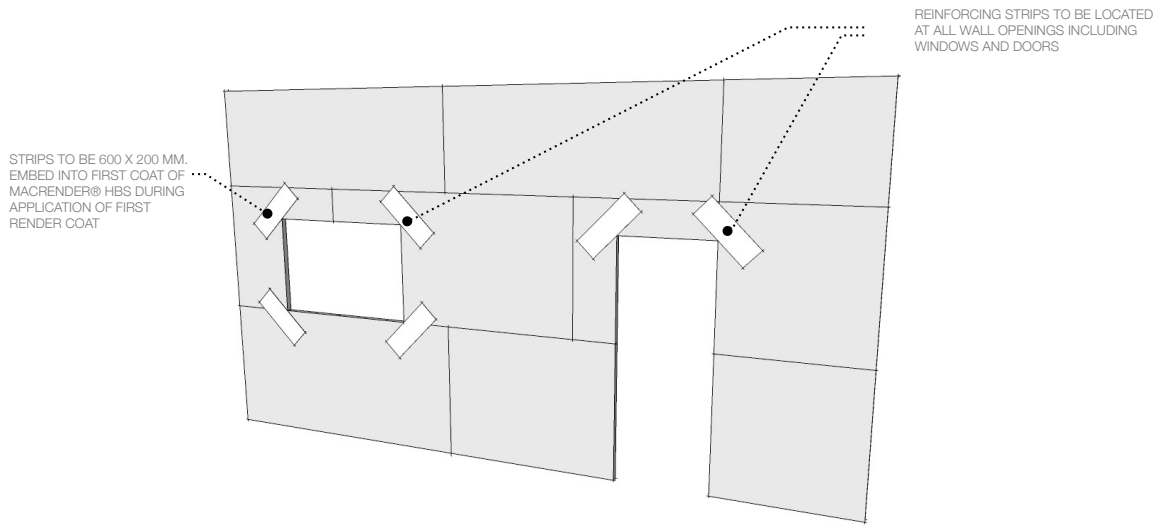
MASTERWALL

RENDER & ACRYLIC TEXTURE

Overview

The Masterwall system is an external lightweight, reinforced, insulated polystyrene wall panel, mechanically fixed to the outer face of the building frame either timber or steel. The complete system includes the application of an acrylic render system, frame wraps, trims, sealants and flashings at openings that combine to create a weather-tight building envelope.





Basic System Composition

COMPONENT	DESCRIPTION
Panel	The base material is M Grade expanded polystyrene (EPS) with an added fire retardant. Available in 2400 x 1200 x 50/75/100/125mm sheets
Facing	A factory applied, flexible cementitious material designed for both an excellent mechanical fix and a natural chemical bond to the polystyrene cladding, using binders and polymers.
Reinforcing	A flexible, high strength polymer modified patching compound reinforced with embedded alkali-resistant fibreglass mesh (145 gsm min).
Render System	A polymer modified render coat applied in one or two coats. Provides added coating thickness and impact resistance.
Decorative Coating System	Acrylic based textured finish (optional) and protective membrane for the final coat. Can be tinted to an almost unlimited colour selection. Dark colours should be avoided.

Materials Required

- > Masterwall EPS base sheets in either 50, 75, 100 or 125 mm thickness
- > Breathable building paper (non-breathable paper not accepted)
- > Approved flashing tape for weatherproofing window and door openings.
- > Class 3 galvanised screws for fastening sheets. Refer to Masterwall Technical Manual for details.
- > 40 mm plastic washers
- > Polyurethane construction sealant/adhesive for bonding all sheet edges during installation and for caulking around window and door reveal/frames after rendering and texture coating.
- > Waterproofing/tanking material i.e. Tremco Tremproof 120L for application to ground level sheets as per Masterwall installation specification.
- > 200 mm alkali-resistant fibreglass mesh jointing tape for reinforcement of abutting sheet joints and reinforcement of corners at opening including doors and windows (see Figure 1.2).
- > Fibreglass/aluminium angles for application to external corners.
- > Macrender® HBS for levelling render coat.
- > Macrender® HBS/Masterwall GP Render for second coat.
- > Mactexture decorative textured finish coat in selected grade and colour.
- > MAC Satin membrane for protective, low maintenance finish coat.

Table 1.1 Coating Application Schedule (In Order Of Application)

PRODUCT	NOTES	SPREAD RATE	NOTES
Sheet Installation	As per Masterwall installation manual.		
Macrender® HBS	Provides adhesion to base panels and acts as the key coat for the render system. Incorporates 200 mm FG mesh reinforcement at all sheet joints. All beads and trims to be incorporated in this coat.	2.5 - 4 mm	
Macrender® HBS / Masterwall GP Render	Provides added thickness and strength to render system whilst providing a suitable surface finish for subsequent coats in the system.	2.5 - 4 mm. Total thickness for both render coats 5 - 7 mm (min) in total as per Masterwall requirements.	
Macprime	Acrylic primer provides barrier against moisture ingress and reduces effects of alkalinity on acrylic top-coats.	Approx. 5.5 metres per litre.	1 coat.
Mactexture acrylic textured finish	Provides a decorative textured finish and added durability of the coating system.	Varies greatly depending on selected textured finish. See product specific data for further information.	1 coat. Optional if painted render finish is required.
Satin acrylic membrane	Resists moisture ingress, fading and dirt pick-up. Also provides limited crack-bridging ability. 2 x coats required.	Approx. 4 m ² / litre per coat.	2 coats.
Polyurethane sealant	Applied to window and door reveals/frames after the coating process to provide weathertight seal.	N/A	Required on all systems as per Practica MMC Masterwall installation manual.

PRIOR TO RENDERING

Masterwall System Installation

- > Install Masterwall system as per technical documentation. The Masterwall Technical Manual is available for download at www.masterwall.com.au
- > All abutting sheet joints must be fully glued with liquid or foam polyurethane construction sealant/adhesive.
- > Flashing tape applied from joinery to wall studs then caulked between tape and Masterwall panels as per Masterwall requirements.

Preparation For Render Application

- > After sheet installation, ensure all washer heads are fastened flush with the surface of the Masterwall base

sheets.

- > The Masterwall panels must be clean and free from any impurities which may adversely affect the bond strength of the acrylic textured coating system.
- > Remove any loose, chalky or flakey material by brushing as required.

APPLICATION OF RENDER & COATING SYSTEM

Render Coat Application

- > Apply Macrender® HBS to the patched and jointed Masterwall sheet at a thickness of approximately 2.5 - 4 mm. Float to a smooth finish ready to accept a second coat of render. The first coat of Macrender® HBS must incorporate 200 mm FG tape applied to each Masterwall sheet joint. All trims, beads and angles must also be incorporated in this initial render coat.
- > Apply a second coat of render (see table), ensuring a total render thickness of 5 - 7 mm has been achieved as required by Masterwall.
- > Control and movement joints must be placed and installed as per Masterwall Technical Manual or engineers recommendation and must not be bridged by the render or texture coating system.
- > Allow rendered surface to cure for a minimum of 4 days prior to overcoating.

Primer Coat Application

- > Apply a single coat of Macprime to the finished render coat and allow to dry for a minimum 24 hours prior to application of the textured finish.
- > Tinting of Macprime to selected finish colour is recommended to improve opacity, particularly with deep colour selections.

Finish Coat Application

- > Apply selected Mactexture trowel-on or roll-on finish in selected colour as per product specific data sheet. Allow to dry for a minimum 24 hours prior to painting (may require longer in colder weather). Application of a textured finish is optional provided render has a paint-ready finish.
- > Apply two coats of MAC Satin membrane (low sheen or matt) in selected colour. Low sheen recommended for optimum durability and minimal dirt pickup.

Materials Warranty

- > When applied in accordance with the above specification, MAC will provide a 7 year materials warranty against peeling and delamination. This warranty does not cover workmanship or product failure caused as a result of hydrostatic pressure or structural movement. See warranty for details.
- > The Masterwall cladding system is covered by a separate manufacturer's warranty. Contact Masterwall for further details.

IMPORTANT NOTE:

Melbourne Acrylic Coatings Victoria Pty Ltd, its staff and distributors will not accept responsibility for any failure caused as a result of factors beyond our control including but not limited to onsite handling, preparation or application of this product. Application of this product should only be performed by qualified trades people trained in the use of this type of product. Information supplied in this publication is based on our testing and experience and is given in good faith. Suitability of this product should be independently determined prior to use. Warranty is limited to the replacement of any materials proven to be faulty. MAC will not warrant job defects caused as a result of but not limited to, structural movement or entrapped moisture.

WWW.MELBACRYLIC.COM.AU

MAC
**RENDERS &
ARCHITECTURAL
COATINGS**